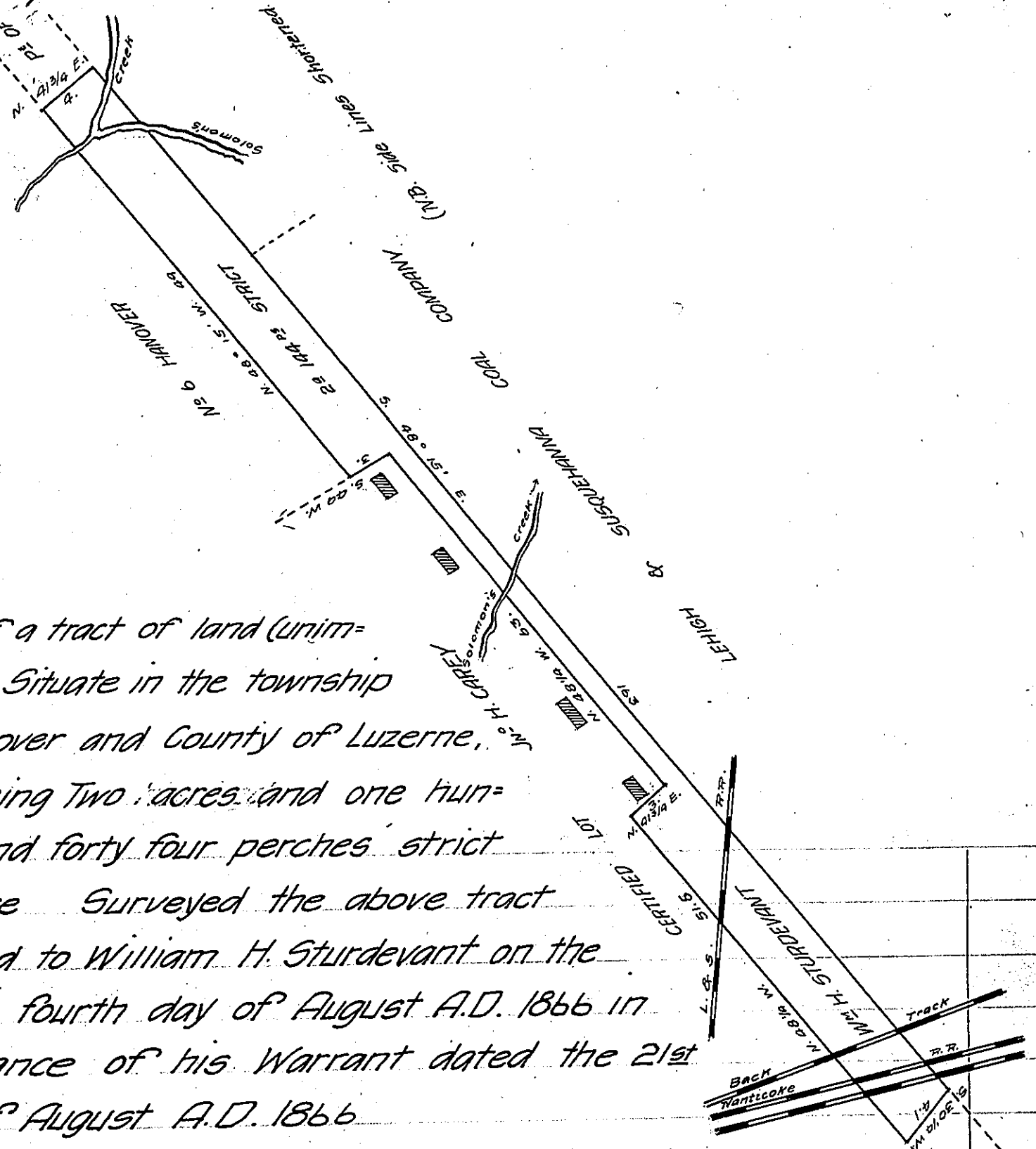


FORM NO 1.

C. 1140 N. 1130
PL. OF ORIG. CERT. FROM
1866



Draft of a tract of land (unimproved) Situate in the township of Hanover and County of Luzerne, Containing Two acres and one hundred and forty four perches strict measure Surveyed the above tract of land to William H. Sturdevant on the twenty fourth day of August A.D. 1866 in pursuance of his Warrant dated the 21st day of August A.D. 1866

John Sturdevant
Surveyor for Luzerne Co.

Hon. J.M. Campbell }
S.G.

IN TESTIMONY that the above is a copy of the original remaining on file in the Department of Internal Affairs of Pennsylvania, made conformably to an Act of Assembly approved the 16th day of February, 1833, I have hereunto set my Hand and caused the Seal of said Department to be affixed at Harrisburg, this twenty fourth day of April 1907

Geo. D. Brown
Secretary of Internal Affairs.